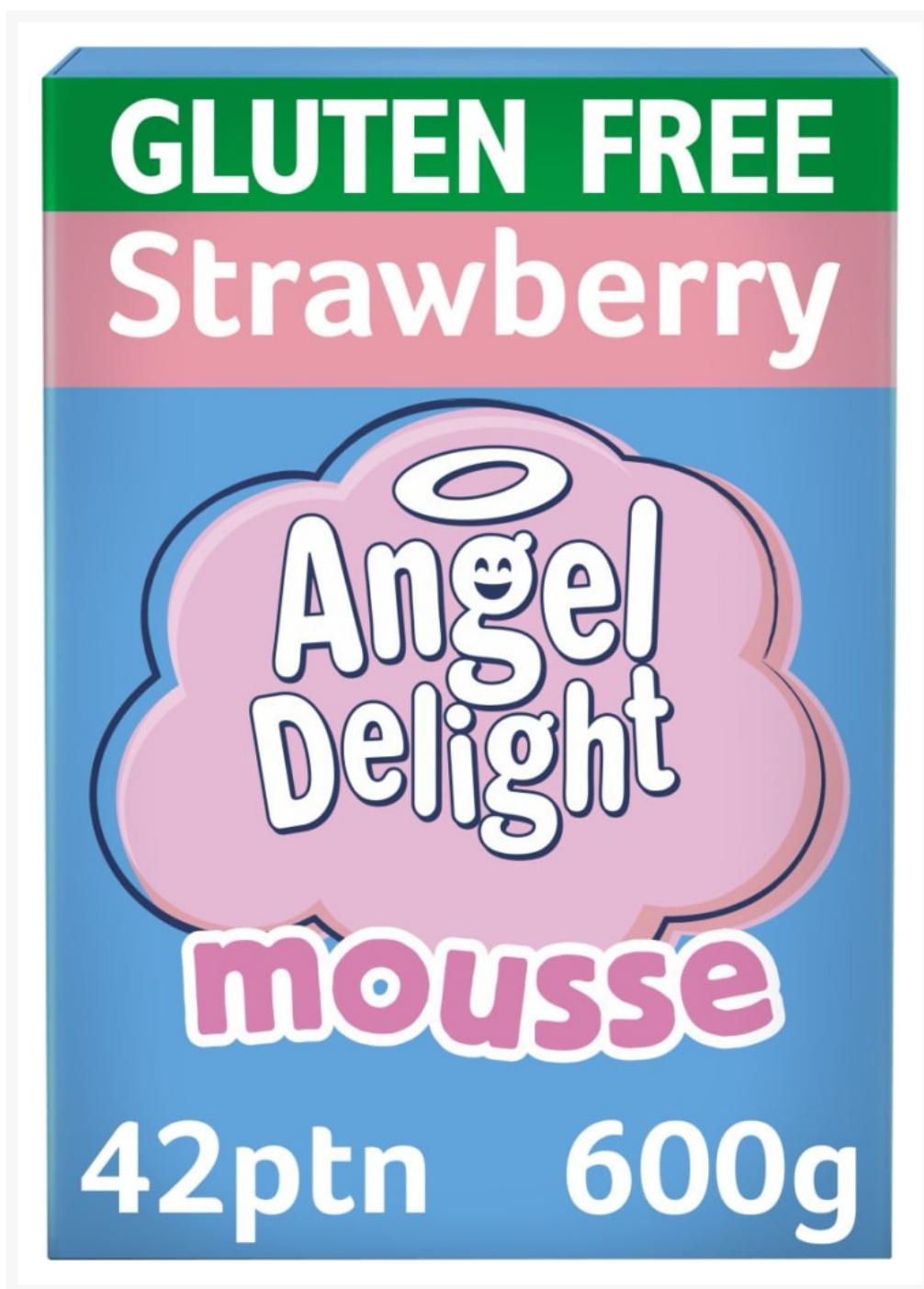




Angel Delight Strawberry Dessert Mousse Mix - 6x600g

Product Disclaimer:

Whilst every care has been taken to ensure this information is correct, the data contained here has been supplied by the respective brand owners and Creed Foodservice is not responsible for the accuracy or completeness of this data. The information is provided in good faith but is for general information purposes only. Creed Foodservice does not manufacture the product. To ensure that you have the most up-to-date information please check the product label on delivery. For more information, please see our full allergen disclaimer or email customerservicehelpdesk@creedfoodservice.co.uk



Allergens

Celery	No
Gluten	No
Crustacea	No
Eggs	No
Fish	No
Lupin	No
Milk	Yes
Molluscs	No
Mustard	No
Nuts	No
Peanuts	No
Sesame	No
Soybeans	No
Sulphites	<10mg

Ingredients

Ingredients	Skimmed MILK Powder, Sugar, Dried Glucose Syrup, Modified Starch, Palm Oil, Emulsifiers (Mono- and Diglycerides of Fatty Acids, Lactic Acid Esters of Mono- and Diglycerides of Fatty Acids, Mono- and Diacetyltartaric Acid Esters of Mono- and Diglycerides of Fatty Acids), MILK Proteins, Gelling Agents (Diphosphates, Sodium Phosphates), Calcium Carbonate, Flavourings, Colours (Beetroot Red, Carotenes), Stabiliser (Potassium Phosphates).
-------------	---

Dietary Information

Approved for a Halal Diet	No
Approved for a Kosher Diet	No
Suitable for Coeliacs	Yes
Suitable for Lactose-Free Diet	No
Suitable for a Vegan Diet	No
Suitable for a Vegetarian Diet	Yes

Nutritional Information

Carbohydrate Per 100g (g)	7.7 g
Carbohydrate of which Sugars per 100g (g)	5.7 g
Fat per 100g (g)	1.4 g
Fat of which Saturates per 100g (g)	1.2 g
Fibre per 100g	0.5 g
Energy per 100g (kcal)	53 kcal
Energy per 100g (kJ)	225 kJ
Protein per 100g (g)	2.5 g
Salt per 100g (g)	0.2 g