

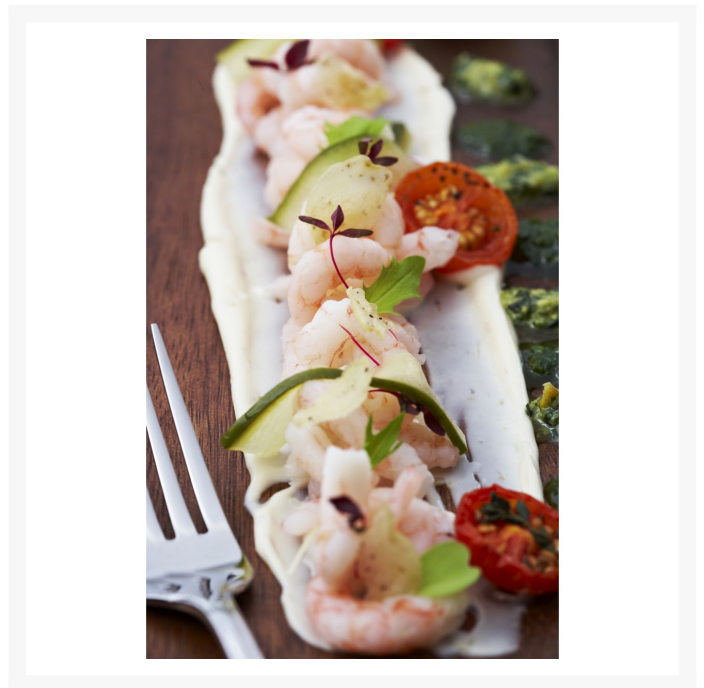


Country Range Seafood Sauce (2x2.25ltr)

Product Disclaimer:

Whilst every care has been taken to ensure this information is correct, the data contained here has been supplied by the respective brand owners and Creed Foodservice is not responsible for the accuracy or completeness of this data. The information is provided in good faith but is for general information purposes only. Creed Foodservice does not manufacture the product. To ensure that you have the most up-to-date information please check the product label on delivery. For more information, please see our full allergen disclaimer or email customerservicehelpdesk@creedfoodservice.co.uk

Product Images



Additional Information

Product Code	176100
Outer EAN 1	5023616437652

Allergens

Celery/Celeriac	No
Contains Cereals Containing Gluten	No
Crustacea	No
Eggs	Yes
Fish	No
Lupin	No
Milk	No
Molluscs	No
Mustard	Yes
Nuts	No
Peanuts	No
Sesame Seeds	No
Soybeans	No
Sulphur Dioxide and Sulphites	No

Ingredients, Storage & Usage

Ingredients	Rapeseed Oil, Water, Sugar, Tomato Purée (6%), Spirit Vinegar, Pasteurised Liquid EGG Yolk, Modified Maize Starch, Salt, Worcester Sauce (Malt Vinegar, Water, Spirit Vinegar, Tamarind Extract, Sugar, Molasses, Colour (Plain Caramel), Onion Powder, Garlic Powder, White Pepper, Clove, Paprika), Spices (MUSTARD), Stabiliser (Xanthan Gum), Preservative (Potassium Sorbate).
Storage Type	Ambient

Dietary Information

Approved for a Halal Diet	No
Approved for a Kosher Diet	No
Suitable for a Vegan Diet	No
Suitable for a Vegetarian Diet	Yes
Suitable for Coeliacs	Yes
Suitable for Nut Allergy Sufferer	Yes
Suitable for Sufferers of Lactose Intolerance	Yes

Nutritional Information

Carbohydrate of which Sugars per 100g (g)	7.8
Carbohydrate Per 100g (g)	11.4
Energy per 100g (kcal)	473
Energy per 100g (kJ)	1957
Fat of which Saturates per 100g (g)	3.2
Fat per 100g (g)	45.1
Protein per 100g (g)	0.8
Salt per 100g (g)	1.7