

CREED

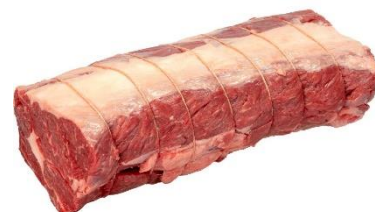
THE FOODSERVICE COMPANY

Product Specification Sheet

Description:	Red Tractor Assured Whole Rib eye	
Product code:	708010	
Origin:	UK	
Processed and packed in:	UK8374	
Delivered:	Fresh, suitable for freezing	
Sold as:	Per KG	
Target weight:	As requested	
Acceptable tolerance:	10%	
Assurance:	Red Tractor Assured	
Notes:	Should be free from odours, discolouration and foreign bodies	
Shelf life if bought fresh:	Min 4 days	Max 6 days
Shelf life if bought frozen:	Min 40 days	Max 60 days
Packaging:	Food grade vacuum pouch	
Label Information:	Product description, weight, storage instructions, batch code, pack date, use by date, Beef labelling information as required	
Storage Instructions:	Fresh meat at <7°C, frozen meat <-18°C Once opened use within 48 hours	

Preparation:

The eye muscle is removed from the fore rib and can be used as a joint or cut into rib eye steaks. Maximum fat thickness 10mm.



Eblex Code:

Date	Issue Number	Authorised By	Signature
18/01/2022	4	G Hannis	